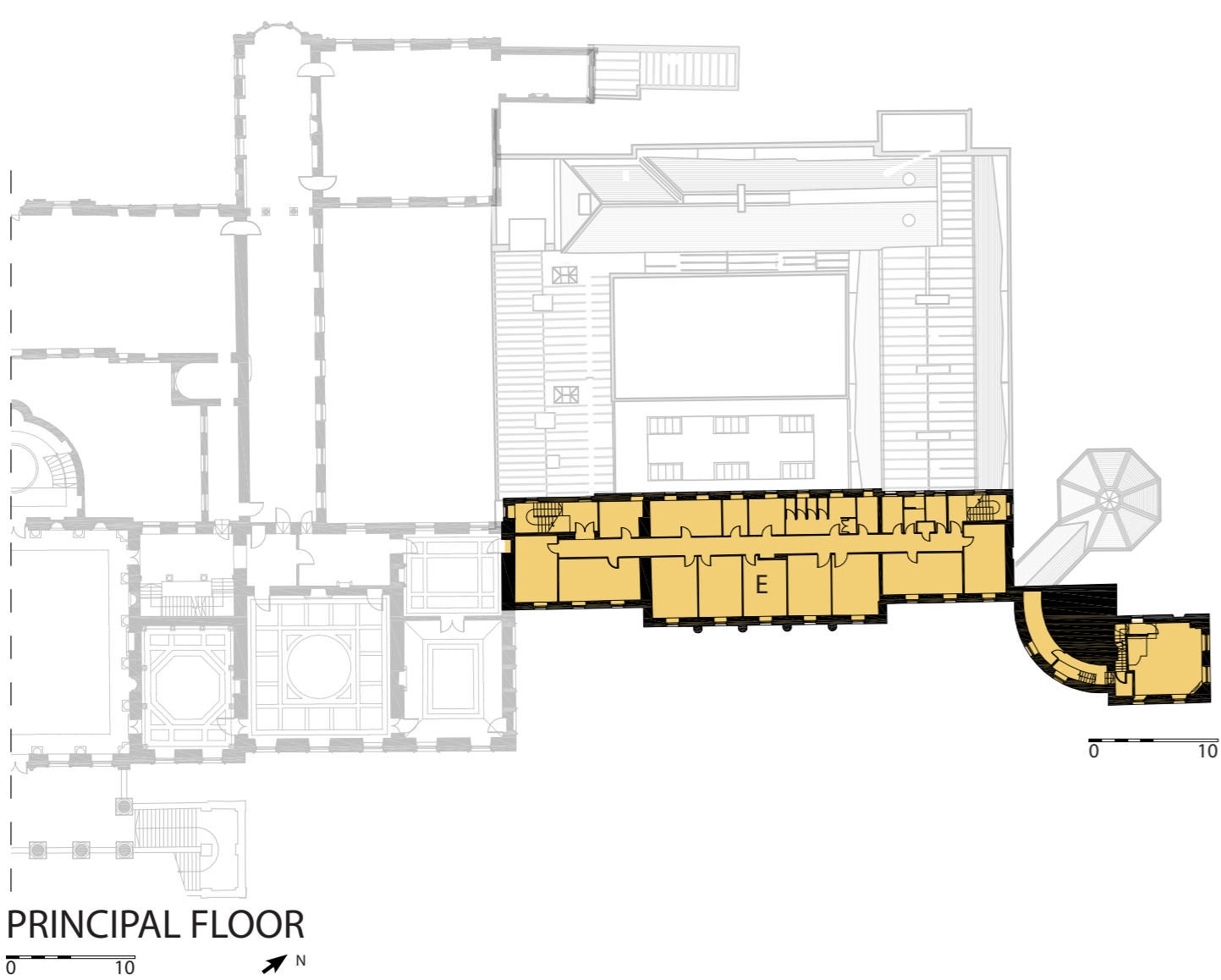
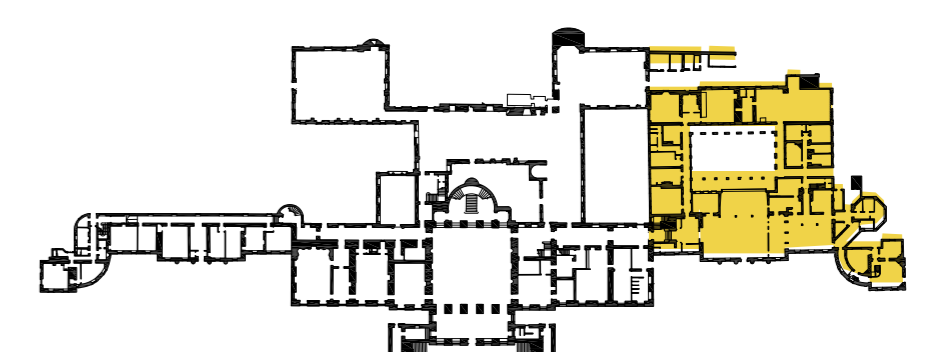


LANDSCAPE
The Park owned by the Fitzwilliam Wentworth Amenity Trust includes several spectacular monuments which are already regularly open to the public



A. Main Events Hall B. Events Courtyard C. Kitchens and Services D. Lift E. Ten Bedrooms to be used with the Events Space.



WENTWORTH WOODHOUSE
THE NORTH WING
WILL PROVIDE SPACE FOR EVENTS AND CATERING